



Two bedroom prototype



Second floor module lifted from truck bed



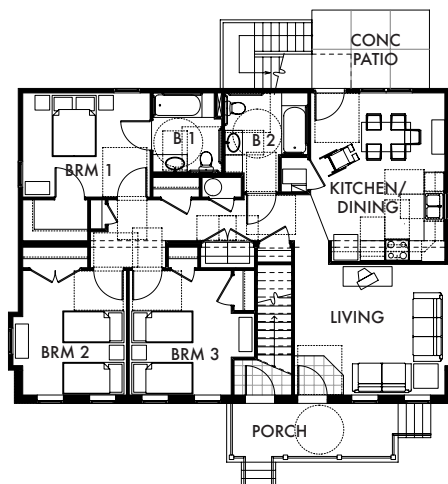
Second floor module being craned into place



Four bedroom corner prototype



Three bedroom prototype



Sample accessible unit plan

Manchester, Pittsburgh, PA • 2007

Located in a historic designated neighborhood, the three varying size prototype buildings with accessible unit with a walk up unit above were designed for Housing Authority of City of Pittsburgh. Challenged by the step up porches along the typical historic buildings that line the streets, the parking and accessible approach to the units were made from the rear of the buildings to allow the historic front porches. Given three months for site and building construction to meet a deadline, Pre cast foundation and the modular units with complete interior finish were transported and craned onto each site. Each prototype structure consisted four modular units. Brick veneer and porches were built on site and built to comply with ENERGY STAR.