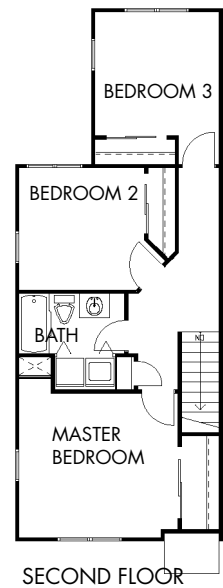
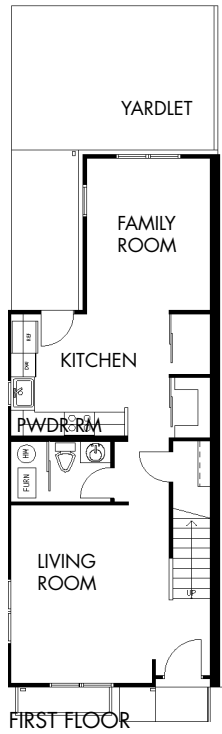


SITE PLAN



Spring Garden, Pittsburgh, PA • 1997

Ten infill townhouse units for low to moderate income housing were designed to fill a vacant site and to promote the return of owner occupancy in urban neighborhoods once filled with family owned homes. The project was developed by the Spring Garden Neighborhood Council, Inc. with URA assistance.

Voskamp Village Townhouses