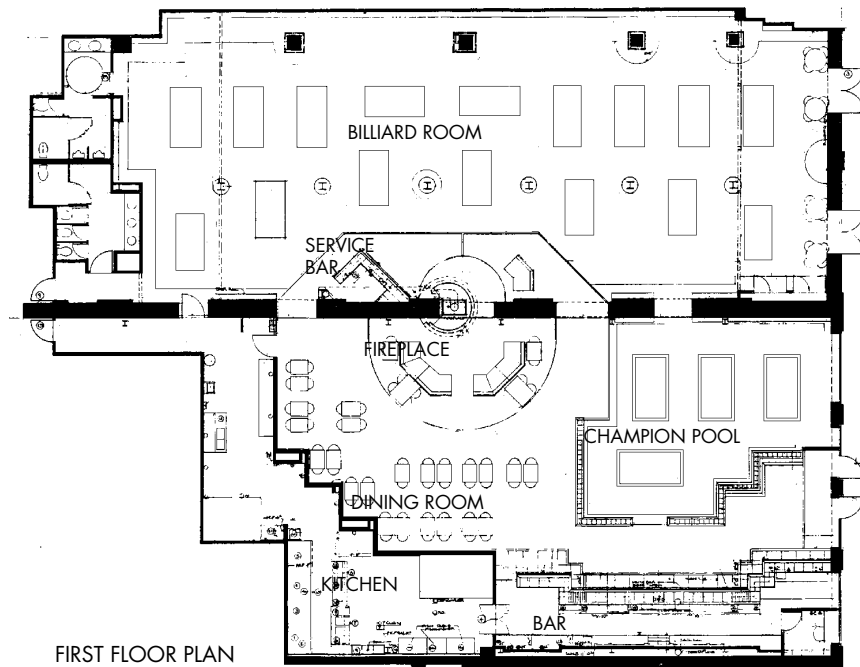




BEFORE FACADE



AFTER FACADE



FIRST FLOOR PLAN

East Carson Street, South Side, Pittsburgh, PA • 1993

Conversion of three industrial buildings totaling 40,000 sq. ft. located in the historic district of the South Side into retail and office space. Awarded "Best Transformation of the Streetscape" by the City of Pittsburgh in 1991 and a Certificate of Recognition by the City of Pittsburgh Historical Review Commission in 1993.