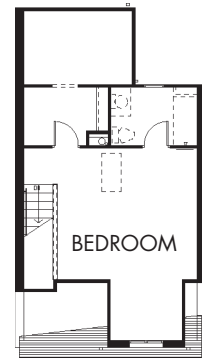
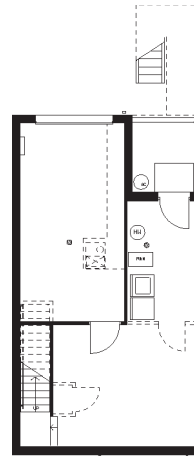


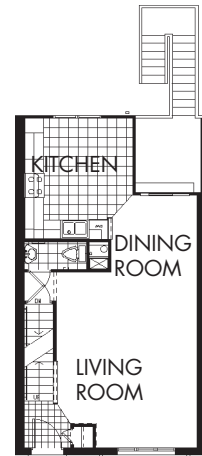
SECOND FLOOR PLAN



THIRD FLOOR PLAN



BASEMENT PLAN



FIRST FLOOR PLAN

Spring Garden, Pittsburgh, PA • 1995

Nine infill townhouse units for low to moderate income housing were designed to fill a partially vacant site and to promote the return of owner occupancy in urban neighborhoods once filled with family owned homes. The project was developed by the Spring Garden Neighborhood Council, Inc. with URA assistance.