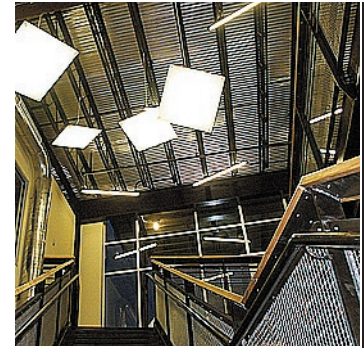




atrium stair



atrium floor with linoleum collage



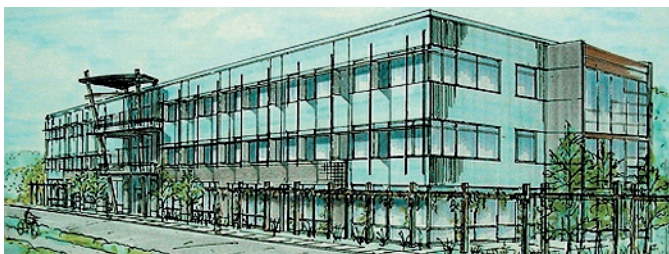
atrium



riverside balcony



parking lot side



conceptual sketch



arbor and sunshading device

LTV SouthSideWorks. Pittsburgh, PA

Design of a new 45,000 s.f. office building on a reclaimed steel mill site facing a riverfront. Features a dynamic open atrium with an exposed steel stair, and structural framing reminiscent of a steel mill. High efficiency HVAC and enhanced daylighting strategies were incorporated, as well as a custom galvanized sunshade screen, arbor and river view balconies distinguish the facade.